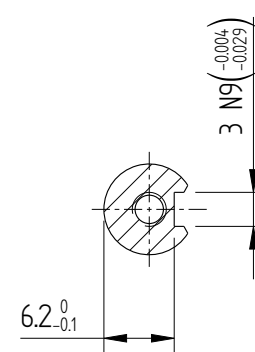
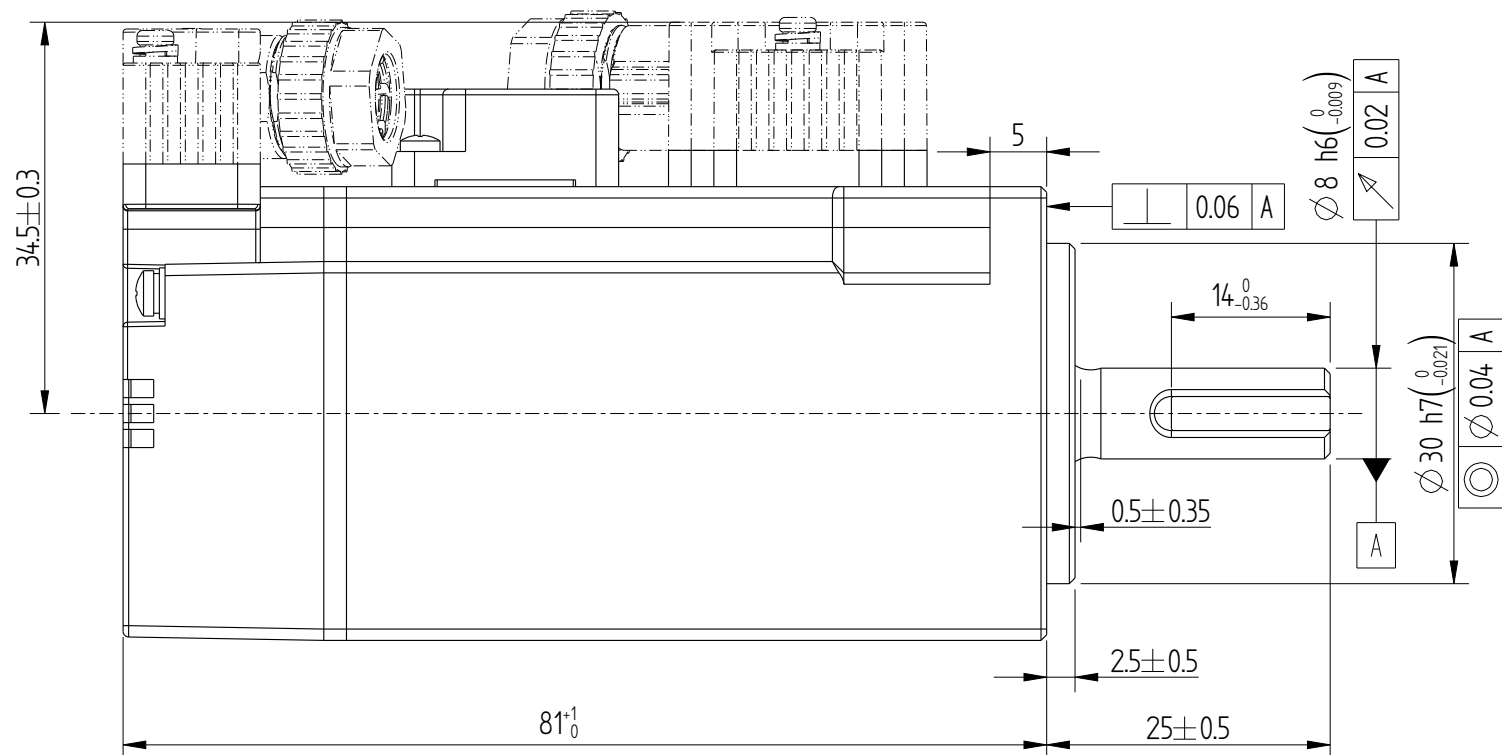
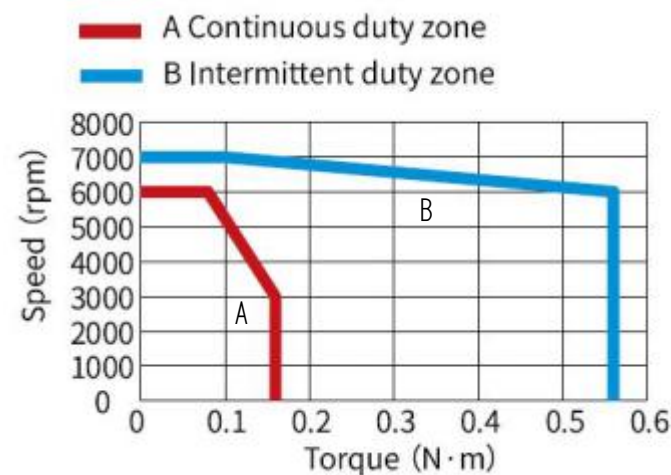
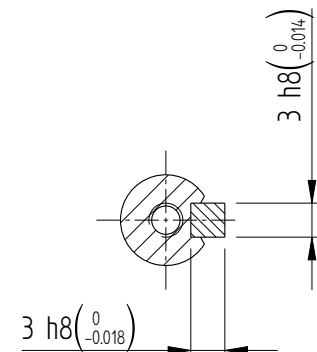


Basic function parameters	
Rated power kW	0.05
Rated voltage V	220
Rated current A	1.27
Peak current at rated speed A	4.78
Rated torque Nm	0.16
Peak torque at rated speed Nm	0.56
Rated speed rpm	3000
Max speed rpm	7000
Rotor inertia $\text{kg} \cdot \text{cm}^2$	$0.04 \pm 10\%$
Encoder resolution	23bit
Insulation class	F(155)
Protection class	IP67
Static torque of brake Nm	≥ 0.32
Brake power supply V	$\text{DC}24 \pm 10\%$
Brake backlash $^{\circ}$	≤ 1.5
Duty cycle	S1
Radial load N	≤ 78
Axial load N	≤ 54

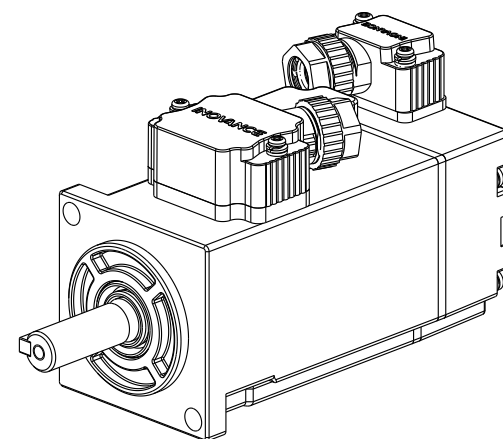
Technical drawing of the front view of a motor. The drawing shows a square base with a circular fan in the center. The fan has four curved blades. The base has four mounting holes, one in each corner. The top of the motor is shown in a cross-section view. Dimensions and features are labeled: 45° for the fan blade angle, $\varnothing 46 \pm 0.3$ for the outer diameter of the fan, M3 for the central screw, 2- $\varnothing 4.5$ for the mounting holes, 40 ± 0.3 for the base width, and 4-R1 for the corner radius.



Dimension of shaft end



Dimension of shaft end with key



Mark	 INOVANCE
	